

**DOCUMENT 00 90 00  
ADDENDUM**

**ADDENDUM NO. [2]                      Date: November 8, 2018**

**RE:                      GLENWOOD COMMUNITY SCHOOL DISTRICT  
ATHLETIC COMPLEX IMPROVEMENTS BID PACKAGE 2 REBID  
400 SIVERS ROAD  
GLENWOOD, IOWA 51534  
HSR PROJECT NO. 18005**

**FROM:                  HSR Associates, Inc  
100 Milwaukee Street  
La Crosse, WI 54603  
(608) 784-1830**

**To:                      Prospective Bidders**

This addendum forms a part of the Contract Documents and modifies the original Bidding Documents dated November 2018. Acknowledge receipt of this Addendum in the space provided on the bid form. Failure to do so may subject the Bidder to disqualification.

This Addendum consists of [2] pages, [1] specification section and [5] 30 x 42 Drawings.

**CHANGES TO BIDDING REQUIREMENTS AND CONDITIONS OF THE CONTRACT:**

1. Section 00 11 13 ADVERTISEMENT FOR BIDS

- a. Plan Distribution: PDF files of the Project may be obtained from the Architect for no cost as follows:  
“Bidding Document PDF files will be available from HSR Associates, Inc. via Sharefile electronic distribution. Access will be given upon request. 608-784-1830. Addendums will be distributed via the Sharefile system to those requesting plans from HSR.”  
HSR will post on our website, plan holders requesting documents. If you received documents from a different source and want to be listed as a bidder/plan holder on our website contact our office.

2. Section 01 23 00 ALTERNATES

- a. Include the following as part of the costing for Alternate 1: “Include cost to increase water service piping size from 1 ½” to 3” to accommodate irrigation requirements.”

**CHANGES TO SPECIFICATIONS:**

3. Section 08 14 16 FLUSH WOOD DOORS

- a. Delete section from contract documents. There are no wood doors.

4. Section 08 71 00 DOOR HARDWARE

- a. Section attached hereto as part of Contract Documents.

## **CHANGES TO DRAWINGS**

5. Sheet A101R FIRST FLOOR STADIUM PLAN 30 x 42 Drawing attached hereto
  - a. Revisions clouded on Drawing.
6. Sheet A302R FIRST FLOOR STADIUM BUILDING SECTIONS 30 x 42 Drawing attached hereto
  - a. Revisions clouded on Drawing.
7. Sheet P104R PLUMBING AND GAS RISERS 30 x 42 Drawing attached hereto
  - a. Revisions clouded on Drawing.
8. Sheet E101R FIRST FLOOR STADIUM LIGHTING PLAN 30 x 42 Drawing attached hereto
  - a. Revisions clouded on Drawing.
9. Sheet E102R SECOND FLOOR PRESS BOX LIGHTING PLAN 30 x 42 Drawing attached hereto
  - a. Revisions clouded on Drawing.

## **PRIOR APPROVALS**

1. Willoughby Industries:
  - a. Shower (SH-1, SH-2)
  - b. Lavatory System (L-2)
2. Loren Cook: Roof Hoods
3. Air Balance:
  - a. Louvers
  - b. Fire Dampers

**END OF DOCUMENT 00 90 00**

## SECTION 08 71 00

### DOOR HARDWARE

#### PART 1: GENERAL

##### 1.01 RELATED DOCUMENTS

- A. Conditions of the Contract and portions of Division One of this Project Manual apply to this Section as though repeated herein.

##### 1.02 WORK INCLUDED

- A. Furnish all finish hardware specified herein, listed in the hardware schedule, or required by the drawings.
- B. Where items of hardware are not definitely or correctly specified and are required for the intended service, such omission, error, or other discrepancy should be directed to the Architect prior to the bid date for clarification by addendum. Otherwise, furnish such items in the type and quantity established by this specification for the appropriate service intended.

##### 1.03 RELATED WORK

- A. Section 08 11 13 – Hollow Metal Doors and Frames.
- C. Section 08 14 16 – Flush Wood Doors.
- D. Section 08 43 13 – Aluminum-Framed Storefronts: Hardware by manufacturer listed.
- E. Section 08 44 13 – Glazed Aluminum Curtain Walls.
- F. Division 26 - Electrical.
- G. Division 28 – Access Control

##### 1.04 REFERENCES

- A. A.D.A. - Americans with Disabilities Act.
- B. ANSI A117.1 - Specifications for making facilities accessible to physically handicapped people.
- C. 36 CFR 1191 - Americans with Disabilities Act Accessibility Guidelines for Buildings and Facilities; Final Rule; current edition; (ADA Standards for Accessible Design).
- D. NFPA 80 - Standards For Fire Doors and Windows.
- E. NFPA 101 - Life Safety Code.
- F. U.L. - Building Material Directory.
- G. D.H.I. - Recommended Locations for Architectural Hardware.
- H. Applicable State and Local Building Codes, including IBC2009.

##### 1.05 SUBMITTALS

- A. Submit five (5) copies of a detailed hardware schedule, vertical format. Prepare under the supervision of an AHC, registered Architectural Hardware Consultant, and under provisions of Division One.
  - 1. Itemize hardware in the sequence and format established by this specification.

2. List and describe each opening separately. Include all doors with identical hardware, except hand, in a single heading. Include door number, room designations, degree of swing, and hand.
  3. List related details. Include dimensions, door and frame material, and other considerations affecting hardware.
  4. List all hardware items to be supplied. Include manufacturer's name, quantity, product name, catalog number, size, finish, attachments, and related details where applicable.
  5. Resubmit five (5) copies of the corrected schedule when required.
- B. Keying Schedule:** After receipt of approved hardware schedule submit a copy of keying schedule as a result of a keying meeting between the Owner and the hardware supplier.
- C. Samples:** If so directed by the Architect, submit samples of finish hardware items for approval. Properly identify each sample as to make and number, and furnish in the specified finish.
- D. Templates:** Furnish a copy of approved hardware schedule, along with applicable templates for factory-prepared hardware to each door and frame fabricator.
- E. Electrical Hardware:** Submit electrical specifications and applicable information to the electrical contractor after receipt of the approved hardware schedule.
- F. Substitutions:** Submit under provisions of Division One. Provide detailed information and catalog cuts indicating the comparison to the specified hardware. If requested by the Architect, provide a sample accompanied by a sample of the specified item for comparison.

## **1.06 QUALITY ASSURANCE**

- A. Qualifications:**
1. Manufacturer: Except where specified in the hardware schedule, furnish products of only one manufacturer for each type of hardware.
  2. Supplier: A company experienced in the builders' hardware industry for a minimum of two (2) years, and can call upon an AHC, registered Architectural Hardware Consultant, for consultation during the full extent of the project
- B. Regulatory Requirements:**
1. Furnish UL or Warnock Hersey listed hardware for all fire labeled and 20 minute openings in conformance with requirements for class of opening scheduled, whether specifically called for in this specification or not.
  2. Furnish hardware that conforms to all applicable state and local building codes, including IBC 2000 positive pressure testing requirements. Where specified hardware is not in conformance with applicable codes, such omission or error should be directed to the Architect prior to the bid date for clarification by addendum; otherwise furnish hardware as required by code.
- C. Training and Inspection:**
1. Hold pre-installation meeting to coordinate training of installation personnel. Installers shall be trained by manufacturer's representative.
  2. Manufacturer's representative shall inspect installation of hardware as part of substantial completion requirements.

## **1.07 DELIVERY, STORAGE AND HANDLING**

- A. Deliver, store and handle in accordance with Division One. Mark each original container with a door number that corresponds to the approved hardware schedule for the installation location.**

- B. Receive, inventory and store hardware in a secure and dry environment; protect against loss and damage.
- C. Report any shortages to the hardware supplier no later than 48 hours after receipt of delivery to the job site.
- D. Stockpile items sufficiently in advance to ensure their availability. Coordinate delivery, handling, and installation of hardware items to ensure orderly progress of total work, and minimize or eliminate losses and damage.

**PART 2: PRODUCTS**

**2.01 ACCEPTABLE MANUFACTURERS**

<u>Products</u>	<u>Specified</u>	<u>Acceptable</u>
Hinges	Stanley	McKinney, Hager
Locks and Latches	Corbin	No Substitute
Push/Pull Latches	Rockwood	Trimco, Burns, Hager
Exit Devices	VonDuprin	No Substitute
Door Closers	LCN	Sargent
Overhead Stops/ HOLDERS	ABH	Dorma, Glynn Johnson
Wall Stops/Floor Stops	Rockwood	Trimco, Hager, DCI
Thresholds, Sweeps, Weatherstrip	Reese	National Guard Products, Pemko

**2.02 HINGES**

- A. Acceptable manufacturers and respective catalog numbers:

<u>Description</u>	<u>P.B.B.</u>	<u>Stanley</u>	<u>McKinney</u>	<u>Hager</u>
Std. Wt. Plain Bearing - Steel	PB81	F179	T2714	1279
Std. Wt. Ball Bearing - Steel	BB81	FBB179	TA2714	BB1279
Std. Wt. Ball Bearing -non ferrous	BB21/BB51	FBB191	TB2314	BB1191
Hvy. Wt. Ball Bearing Steel	4B81	FBB168	T4B3786	BB1168
Hvy. Wt. Ball Bearing – non ferrous	4B21/4B51	FBB179	T4B3386	BB1199

- B. Hinges supplied must be tested and comply with ANSI/BHMA standards for consistency, wear and corrosion resistance.
- C. Quantity: Furnish hinges for each door leaf as follows, unless otherwise noted in groups:
  1. Doors up to and including 90" high - 3 hinges.
  2. Doors over 90" high through 120" high - 4 hinges.
- D. Type: Furnish as follows, unless otherwise noted in groups:
  1. Standard weight, plain bearing hinge for interior openings through 36" wide without a door closer.
  2. Standard weight, ball bearing hinge for interior openings over 36" through 40" wide with a door closer, and for interior openings through 40" wide with a door closer.
  3. Heavy weight, four ball bearing hinge for all exterior openings unless noted in groups.
- E. Size: Furnish as follows, unless otherwise noted in groups:
  1. 1 3/4" doors: 4-1/2" x 4-1/2"
  2. Provide proper hinge width to clear trim and allow full 180° swing.

- F. Hinges for all lockable doors opening outward shall have non-removable pin (NRP). All other hinges shall have non-rising pins.

**2.03 LOCKS AND LATCHES**

- A. Acceptable manufacturers and respective catalog numbers:

<u>Description</u>	<u>Corbin</u>
Heavy Duty Mortise	
Hvy. Duty Grade 1 Cylindrical	CL3300
Std. Duty Grade 2 Cylindrical	

- B. Furnish lock types and functions as specified in the hardware schedule, and as follows:

1. Provide 2-3/4" backset.
2. Provide 2-3/4" x 1-1/8" "T" strike with a dust box for use in wood doors or frames.
3. Provide 4-7/8" x 1-1/4" ANSI strike for installation in a hollow metal door or frame.
4. Locksets to conform to ANSI A156.2, Series 4000, Grade 1 and be UL listed.

**2.04 EXIT DEVICES**

- A. Acceptable manufacturers and respective catalog numbers:

<u>Description</u>	<u>Von Duprin</u>	<u>Corbin</u>	<u>Sargent</u>
Wide Stile Rim	98 RIM	5000	8800
Wide Stile Surf. Vert. Rod	9827	5000	8700
Wide Stile Conc. Vert. Rod	9847	5000	8600
Wide Stile Mortise	9875	5000	8900
Narrow Stile Rim	35 RIM	4000	8500
Narrow Stile Conc. Vert. Rod	3547	4000	8400

- B. Furnish exit device types and functions as specified in the hardware schedule.
- C. Lever handles supplied with exit devices shall match the design specified for locks and latches.

**2.05 PULLS, PUSHBARS, PUSH/PULL PLATES**

- A. Acceptable manufacturers and respective catalog numbers:

<u>Description</u>	<u>Rockwood</u>	<u>Trimco</u>	<u>Burns</u>

- B. Supply product as listed in groups or equal to acceptable manufacturers..

**2.06 DOOR CLOSERS**

- A. Acceptable manufacturers and respective catalog numbers:

<u>Description</u>	<u>LCN</u>	<u>Sargent</u>
Heavy Duty Reg. Arm	4041	350
Heavy Duty Parallel Arm	4041 EDA	350 PED
Heavy Duty Stop Arm	4041 CUSH	350 PS
Medium Duty	1460	1430
Standard Duty-No Cover	1070	1100

- B. Furnish complete with mounting brackets, drop plates, spacers, special shoes, and thru bolts as may be required by the door and frame conditions.

## 2.07 OVERHEAD STOPS/HOLDERS

- A. Acceptable manufacturers and respective catalog numbers:

<u>Description</u>	<u>A.B.H.</u>	<u>ROCKWOOD</u>	<u>Glynn Johnson</u>
Heavy Duty Surface	9000	0H900 SERIES	90
Heavy Duty Concealed	1000	OH100 SERIES	100
Standard Duty Surface	4400	OH1000 SERIES	450
Standard Duty Concealed	4000	OH200 SERIES	410

- B. Furnish an overhead stop if a door opens against equipment, casework, sidelights, or other objects that would make wall bumpers inappropriate, and as specified in the hardware groups.

## 2.08 WALL STOPS

- A. Acceptable manufacturers and respective catalog numbers:

<u>Description</u>	<u>Rockwood</u>	<u>Hager</u>
Wrought Convex Wall	407	232W
Wrought Concave w/Toggle	409	237W

- B. When "wall stop" is called for in hardware group, provide 407 or 409. When overhead stops are required, they will be specified by product number in the group.

- C. Wall stops shall not be mounted to casework, cabinet work, sidelights, or equipment.

## 2.09 THRESHOLDS, SWEEPS, WEATHERSTRIP, DRIP CAPS, GASKET, ASTRAGALS

- A. Acceptable manufacturers and respective catalog numbers:

<u>Description</u>	<u>Reese</u>	<u>Pemko</u>	<u>National Guard</u>
Threshold	S205	171A	425A
Sweep	323	315N	200N
Sweep	967	18133CP	OV633
Weatherstrip	970	45100CP	603
Weatherstrip	DS78	315CR	130N
Gasket	797B	S88	1010

- B. Where specified in groups, furnish the above products unless otherwise detailed.

## 2.10 DOOR HARDWARE FINISHES

- A. Unless indicated otherwise in the groups provide finishes as follows:

1. Hinges, exterior:	US32D
2. Hinges, interior:	US26D
3. Exit Devices:	US32D
4. Locks and Latches:	US26D
5. Pulls, Pushbars, Push/Pull:	US32D
6. Door Closers:	Painted Aluminum
7. Overhead Stops:	Painted Aluminum
8. Wall Stops:	US32D
9. Gasket:	Black
10. Thresholds:	Mill Aluminum
11. Weatherstrip, Sweeps:	Clear Anodized Aluminum

## 2.11 KEYING

- A. The Hardware Supplier, in consultation with the Owner's authorized representative, shall prepare a detailed keying schedule. A copy of the final approved keying schedule bearing the signature of approval of the Owner's Representative shall be filed with the Architect. All locks shall be keyed into the same system as is used on the existing building.
- B. Key locks in sets or subsets. Hardware supplier shall provide (6) each grand master key(s) and 2 each master keys under the base bid. Additional keys requested by the the Owner shall be an additional cost.
- C. Hardware supplier shall provide two (2) change keys per lockset. Additional keys for each keyed group requested by the Owner shall be an additional cost.
- D. Grand master and master keys shall be delivered by registered mail direct from the manufacturer to the Owner.
- E. **Cylinders must be Corbin Russwin keyway. Will be new system for this project.**

## PART 3: EXECUTION

### 3.01 EXAMINATION

- A. Examine doors, frames, and related items for conditions that would prevent the proper application of finish hardware. Do not proceed until defects are corrected.

### 3.02 INSTALLATION

- A. Install each hardware item in strict compliance with the manufacturer's printed instructions and recommendations, using only fasteners supplied by, or called for by the manufacturer.
- B. Set units level, plumb and true to the line and location. Prepare and reinforce the attachment substrate as necessary for proper installation and operation.
- C. Mortise and cut to close tolerance and conceal evidence of cutting in the finished work. Drill and countersink units which are not factory prepared for anchorage fasteners.
- D. If manufacturer's instructions do not call out a mounting location, refer to the Door and Hardware Institute's publication *Recommended Locations for Architectural Hardware*.
- E. Deliver to the Owner one (1) complete set of installation and adjustment instructions, as well as all tools that were furnished with the hardware.

### 3.03 ADJUSTMENT AND CLEANING

- A. At final completion, adjust and check each operating item of hardware at each door to ensure proper operation and function of every unit. Lubricate any moving parts that do not operate freely, smoothly, and quietly using only lubricant as recommended by the manufacturer of the hardware item. Replace units that cannot be adjusted or lubricated to operate properly.
- B. Instruct the Owner's personnel in the proper adjustments of the hardware as needed.
- C. Clean and restore hardware to the original finish.



### 3.04 HARDWARE SCHEDULE

#### HARDWARE GROUP 1

EACH SINGLE DOOR TO HAVE:  
DR. A100, A101, A103, A108

1 EA	CONTINUOUS HINGE	651 US32D	STANLEY
1 EA	CLASSROOM DEADBOLT	DL3217 C6 626	CORBIN
1 EA	PULL	110 X 70C US32D	ROCKWOOD
1 EA	PUSH PLATE	70RKW US32D	ROCKWOOD
1 EA	CLOSERS	4111 SCUSH 689	LCN
1 EA	WALL STOP	409 US32D	ROCKWOOD
1 EA	THRESHOLD	S425A36	REESE
1 EA	WEATHERSTRIPPING	815A3684	REESE
1 EA	SWEEP	323C36	REESE
1 EA	RAIN DRIP	R201A48	REESE

#### HARDWARE GROUP 2

EACH SINGLE DOOR TO HAVE:  
DR. A104b, A105b, A107b, A113f, B201, B202, B203, B205, B206, B207

3 EA	HINGES	FBB199 4.5 X 4.5 630 NRP	STANLEY
1 EA	ENTRANCE LOCKS	CL3351 C6 NZD 626	CORBIN
1 EA	CLOSERS	4111 SCUSH 689	LCN
1 EA	THRESHOLD	S425A36	REESE
1 EA	WEATHERSTRIPPING	815A3684	REESE
1 EA	SWEEP	323C36	REESE
1 EA	RAIN DRIP	R201A48	REESE

#### HARDWARE GROUP 3

EACH SINGLE HM DOOR TO HAVE:  
DR. A102

3 EA	HINGES	FBB179 4.5 X 4.5 652	STANLEY
1 EA	STORERM LOCKS	CL3357 C6 NZD 626	CORBIN
1 EA	WALL STOP	409 US32D	ROCKWOOD
3 EA	SILENCERS	608RKW GREY	ROCKWOOD

#### HARDWARE GROUP 4

EACH SINGLE DOOR TO HAVE:  
DR. A104a, A105a, A107a

3 EA	HINGES	FBB199 4.5 X 4.5 630 NRP	STANLEY
1 EA	ENTRANCE LOCKS	CL3351 C6 NZD 626	CORBIN
1 EA	CLOSERS	4111 SCUSH 689	LCN
1 EA	THRESHOLD	S425A36	REESE
1 EA	WEATHERSTRIPPING	815A3684	REESE
1 EA	SWEEP	323C36	REESE

**HARDWARE GROUP 5**

EACH SINGLE HM DOOR TO HAVE:  
DR. A106a, A106b

1 EA	CONTINUOUS HINGE	651 US32D	STANLEY
1 EA	CLASSROOM DEADBOLT	DL3217 C6 626	CORBIN
1 EA	PULL	110 X 70C US32D	ROCKWOOD
1 EA	PUSH PLATE	70RKW US32D	ROCKWOOD
1 EA	CLOSERS	4111 EDA 689	LCN
1 EA	WALL STOP	409 US32D	ROCKWOOD
3 EA	SILENCERS	608RKW GREY	ROCKWOOD

**HARDWARE GROUP 6**

EACH SINGLE DOOR TO HAVE:  
DR. A109

3 EA	HINGES	FBB199 4.5 X 4.5 630 NRP	STANLEY
1 EA	PRIVACY MORT LOCK	ML2068 NSF 626 M19V C6	CORBIN
1 EA	CLOSERS	4111 SCUSH 689	LCN
1 EA	THRESHOLD	S425A36	REESE
1 EA	WEATHERSTRIPPING	815A3684	REESE
1 EA	SWEEP	323C36	REESE
1 EA	RAIN DRIP	R201A48	REESE

**HARDWARE GROUP 7**

EACH SINGLE DOOR TO HAVE:  
DR. A110

3 EA	HINGES	FBB199 4.5 X 4.5 630 NRP	STANLEY
1 EA	STORERM LOCKS	CL3357 C6 NZD 626	CORBIN
1 EA	CLOSERS	4111 SCUSH 689	LCN
1 EA	THRESHOLD	S425A36	REESE
1 EA	WEATHERSTRIPPING	815A3684	REESE
1 EA	SWEEP	323C36	REESE
1 EA	RAIN DRIP	R201A48	REESE

**HARDWARE GROUP 8**

EACH SINGLE HM DOOR TO HAVE:  
DR. A112a, B100a

3 EA	HINGES	FBB179 4.5 X 4.5 652	STANLEY
1 EA	ENTRANCE LOCKS	CL3351 C6 NZD 626	CORBIN
1 EA	CLOSER	4011 REG 689	LCN
1 EA	CONCEALED OHS	100S SERIES 630	GLYNN JOHN
1 EA	THRESHOLD	S425A36	REESE
1 EA	WEATHERSTRIPPING	815A3684	REESE
1 EA	DOOR BOTTOM	DB595A36	REESE
1 EA	RAIN DRIP	R201A48	REESE

**HARDWARE GROUP 9**

EACH SINGLE DOOR TO HAVE:  
DR. B101, B102

3 EA	HINGES	FBB199 4.5 X 4.5 630 NRP	STANLEY
1 EA	PRIVACY MORT LOCK	ML2068 NSF 626 M19V C6	CORBIN
1 EA	CLOSERS	4011 REG 689	LCN
1 EA	CONCEALED OHS	100S SERIES 630	GLYNN JOHN
1 EA	THRESHOLD	S425A36	REESE
1 EA	WEATHERSTRIPPING	815A3684	REESE
1 EA	DOOR BOTTOM	DB595A36	REESE
1 EA	RAIN DRIP	R201A48	REESE

**HARDWARE GROUP 10**

EACH SINGLE DOOR TO HAVE:  
DR. B103

3 EA	HINGES	FBB199 4.5 X 4.5 630 NRP	STANLEY
1 EA	STORERM LOCKS	CL3357 C6 NZD 626	CORBIN
1 EA	CLOSERS	4011 REG 689	LCN
1 EA	THRESHOLD	S425A36	REESE
1 EA	WALL STOP	409 US32D	ROCKWOOD
1 EA	WEATHERSTRIP	815A3696	REESE
1 EA	SWEEP	323C36	REESE
1 EA	THRESHOLD	S42536	REESE

**HARDWARE GROUP 11**

EACH SINGLE ALUM DOOR TO HAVE:  
DR. B104

1 EA	CONTINUOUS HINGE	BY ALUM DR/FR SUPPLIER	
1 EA	DEAD LATCH	4510-4-5/6-1-01 628	ADAMS RITE
1 EA	PUSH PADDLE	4591-01-02/14-00-628	ADAMS RITE
1 EA	MORTISE CYLINDER	1080-114-A03-6-626	CORBIN
1 EA	PUSH/PULL COMBO	BF15747 US32D	ROCKWOOD
1 EA	CLOSERS	4111 SCUSH 689	LCN
1 EA	DROP PLATE	4110-18 689	LCN
1 EA	CUSH SHOE SUPPORT	4110-31 689	LCN
1 EA	BLADE SPACER	4110-60 689	LCN
1 EA	THRESHOLD	S425A36	REESE
1 EA	WEATHERSTRIP/SWEEP BY ALUM DR/FR SUPPLIER		

**HARDWARE GROUP 12**

EACH SINGLE HM DOOR TO HAVE:  
DR. B204

3 EA	HINGES	FBB199 4.5 XX 4.5 630 NRP	STANLEY
1 EA	ENTRANCE LOCKS	CL3351 C6 NZD 626	CORBIN
1 EA	CLOSER	4011 REG 689	LCN
1 EA	WALL STOP	409 US32D	ROCKWOOD
1 EA	THRESHOLD	S425A36	REESE
1 EA	WEATHERSTRIPPING	815A3684	REESE
1 EA	DOOR BOTTOM	DB595A36	REESE
1 EA	RAIN DRIP	R201A48	REESE

**HARDWARE GROUP 13**

EACH SINGLE DOOR TO HAVE:  
DR. B105

3 EA	HINGES	FBB199 4.5 X 4.5 630 NRP	STANLEY
1 EA	CLASSRM LOCKS	CL3355 C6 NZD 626	CORBIN
1 EA	CLOSERS	4111 HEDA 689	LCN
1 EA	WALL STOP	409 US32D	ROCKWOOD
1 EA	WEATHERSTRIP	815A3696	REESE
1 EA	SWEEP	323C36	REESE
1 EA	THRESHOLD	S42536	REESE
1 EA	RAIN DRIP	R201A48	REESE

**END OF SECTION 08710**



Consultant:

GLENWOOD COMMUNITY SCHOOL DISTRICT  
ATHLETIC COMPLEX IMPROVEMENTS - BID PKG. #2 -  
REBID  
Project Location: 400 SIVERS RD.  
GLENWOOD, IA 51534  
Project Title:  
Sheet Title:  
FIRST FLOOR STADIUM PLAN

Project Number:  
**18005**

Project Date:  
**NOVEMBER 2018**

Drawn By:  
**MKM**

Key Plan:

No.	Description	Date
A2	ADDENDUM #2	11/14/18

Graphic Scale:  
**VARIES**

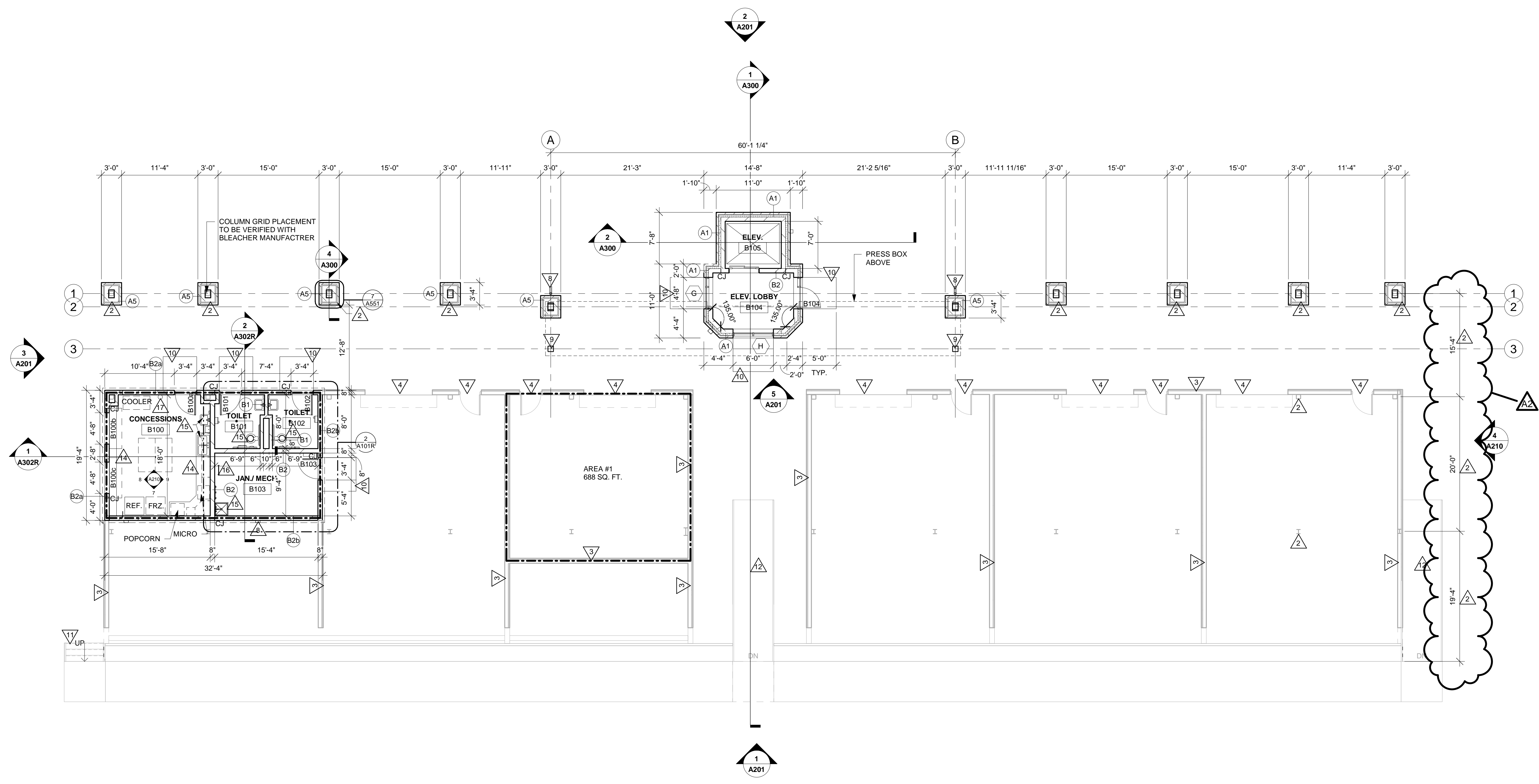
Last Update:  
**11/8/2018 10:36:13 AM**

**A101R**

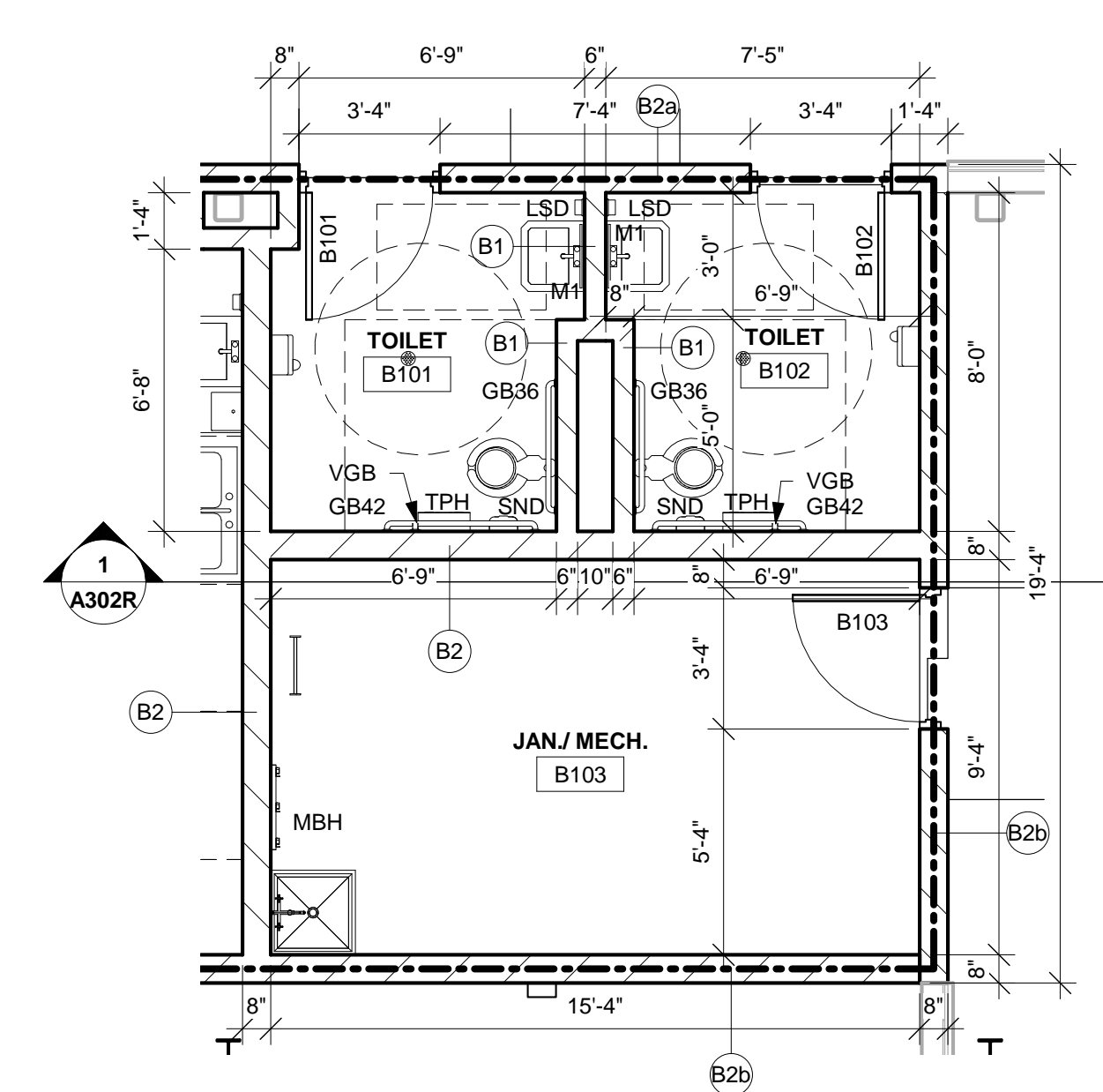
- GENERAL NOTES:**
- A SEE ID SHEETS FOR FLOOR AND WALL FINISH LAYOUTS.
  - B LOOSE FURNISHINGS EXCEPT AS NOTED SHALL BE PROVIDED AND INSTALLED BY THE OWNER.
  - C VERIFY EXACT SIZE AND LOCATION OF ALL MECHANICAL / PLUMB AND ELEC. OPENINGS - GENERAL CONTRACTOR SHALL BE RESPONSIBLE FOR FINISH AT ALL VISIBLE AREAS. ALL OPENING SHALL BE SEALED AFTER UTILITY INSTALLATION.
  - D PAINT ALL EXPOSED STEEL LINTELS.
  - E INSTALL DILLNOSE CMU AT ALL OUTSIDE CORNERS W/O TILE AND AT DOOR JAMBS AS DETAILED. NO BULLNOSE AT WINDOW JAMBS.
  - F SEE STRUCTURAL FOR SLAB CONTROL JOINTS.
  - G SEE A550 FOR WALL CONTROL JOINT DETAILS. SEE PLANS AND ELEVATIONS FOR CL LOCATIONS. CL = CONTROL JOINTS.
  - H REFER TO OVERALL PLANS FOR FIRE RATING LOCATIONS AND ACCESSIBILITY ROUTES.
  - J EXTEND ALL WALLS TO DECK UNLESS NOTED OTHERWISE. SEE A500 FOR TOP OF WALL DETAIL.
  - K UNLESS NOTED OTHERWISE RESTROOM FLOORS SHALL BE SLOPED A MIN. 1/16" - 1/2" TO FLOOR DRAINS - "CENTER" IF NO FLOOR DRAINS.
  - L PLANS SHOWN ON A103 ARE FOR SOFTBALL - ALTERNATE INCLUDES ANOTHER SET FOR BASEBALL - SEE OVERALL SITE PLAN ON A004 AND CIVIL SHEETS.
  - M SEE A500 FOR TYPICAL HEAD FLASHING AND THROUGH-WALL FLASHING ISOMETRIC DETAILS.
  - N GEN. CONTRACTOR TO PROVIDE CONC. EQUIP. PADS/CURBS AS REQUIRED FOR MECHANICAL EQUIP. - VERIFY SIZE/PROFILE/LOCATION WITH MECHANICAL.
  - P SEE A550 FOR WALL BRICK EXPANSION JOINT DETAILS. SEE PLANS AND ELEVATIONS FOR BEJ LOCATIONS. BEJ = BRICK EXPANSION JOINTS

- LEGEND:**
- (A) SYMBOL INDICATES WALL TYPE - SEE SHEET A601 FOR WALL TYPE DETAILS.
  - (W) SYMBOL INDICATES WINDOW TYPE. SEE SHEET A600 FOR WINDOW FRAME ELEVATIONS.
  - (T) SYMBOL INDICATES CONSTRUCTION NOTE THIS SHEET
  - 1 HOUR WALL

- KEY NOTES PLAN - A101 & A102**
- 1 DEPRESSED SLAB IN COOLER/FREEZER AREA.
  - 2 VERIFY FINAL COLUMN LAYOUT AND SPACING WITH BLEACHER MANUFACTURER.
  - 3 METAL ENCLOSURE PANELS BY BLEACHER MANUFACTURER - COORDINATE OPENINGS W/ ARCH.
  - 4 OVERHEAD AND ACCESS DOORS BY BLEACHER MANUFACTURER.
  - 5 18" D TABLE - PROVIDED BY OWNER.
  - 6 GUARD RAILS AND DECKING TO BE PROVIDED BY BLEACHER MANUFACTURER.
  - 7 TUBE STEEL COLUMNS FOR METAL TRELIS - SEE STRUCTURAL COORDINATE CONNECTION AND FINAL LOCATION W/ BLEACHER MANUFACTURERS SEATING LAYOUT.
  - 8 PRE-FINISHED SEAMLESS OPEN FACED DOWNSPOUTS - TERMINATE INTO STORM - SEE CIVIL.
  - 9 EXPOSED STEEL COLUMNS - PRIME AND PAINTED.
  - 10 CONC. STOOP - SEE STRUCTURAL.
  - 11 STAIRS TO BE PROVIDED BY BLEACHER MANUFACTURER.
  - 12 RAMPS TO BE PROVIDED BY BLEACHER MANUFACTURER.
  - 13 GRANDSTAND BLEACHER SYSTEM - FINAL SEATING LAYOUT BY BLEACHER MANUFACTURER.
  - 14 PLUMBING CASEWORK W/ STAINLESS STEEL COUNTERTOP - SEE ELEV. A210.
  - 15 PLUMBING FIXTURES - SEE PLUMB.
  - 16 ROOF ACCESS LADDER AND HATCH.
  - 17 FIRE EXTINGUISHER - BRACKET MOUNTED.



**1 FIRST FLOOR STADIUM**  
1/8" = 1'-0"



**2 ENLARGED RESTROOM PLAN**  
1/4" = 1'-0"

ACCESSORY SCHEDULE			OWNER FURNISHED	CONTRACTOR FURNISHED	CONTRACTOR INSTALLED	OWNER INSTALLED
BCS	ABBREVIATION	ITEM	STD. MOUNTING HEIGHT			
		CHANGING STATION	CHANGING SURFACE @ 2'-9 1/2" A.F.F.			
CH		COAT HOOK (DOUBLE)	BOT. @ 4'-6" A.F.F.			
FL		12"W x 15"D x 72"H FULL HEIGHT LOCKERS W/ SLOPED TOPS ON A 4" CONCRETE BASE W/ WOOD SLEEPERS	LOCKERS - OPO CONCRETE BASE IN CONTRACT			
GB		GRAB BAR (SEE PLAN FOR LOCATION AND SIZE)	TOP @ 2'-10" A.F.F.			
HL		18"W x 18"D x 36"H DBL HIGH LOCKERS W/ SLOPED TOPS ON A 4" CONCRETE BASE W/ WOOD SLEEPERS	LOCKERS - OPO CONCRETE BASE IN CONTRACT			
LSD		LIQUID SOAP DISP. (OFCI)	BOT. @ 3'-4" A.F.F.			
M1		MIRROR 18"W x 36"H W/ METAL EDGES & SHELF	BOT. @ 3'-4" A.F.F.			
M2		MIRROR 18"W x 60"H W/ METAL EDGES	TOP @ 6'-0" A.F.F.			
MBH		MOP AND BROOM HOLDER	TOP @ 5'-0" A.F.F.			
PTD		PAPER TOWEL DISPENSER (OFCI)	BOT. @ 3'-6" A.F.F.			
PTP		PLASTIC TOILET PARTITION	FLOOR MOUNTED, OVERHEAD BRACED			
SC		SHOWER CURTAIN & ROD	TOP @ 6'-4" A.F.F.			
SND		SANITARY NAPKIN DISPOSAL	TOP @ 2'-6" A.F.F.			
TPH		TOILET PAPER HOLDER	CENTER @ 2'-0" A.F.F.			
TH		TOWEL HOOK	TOP @ 4'-6" A.F.F.			
UP		URINAL PARTITION - WALL MOUNTED				
VGB		VERTICAL GRAB BAR - C.L. 40" FROM BACK WALL	BOT. @ 3'-4" A.F.F.			

- ACCESSORY SCHEDULE GENERAL NOTES:
1. ALL ACCESSORIES TO BE PROVIDED AND INSTALLED BY CONTRACTOR, UNLESS NOTED OTHERWISE.
  2. CONFIRM EXACT LOCATION OF EACH ACCESSORY WITH OWNER PRIOR TO INSTALLATION.
  3. SURFACE MOUNTED ACCESSORIES SHALL BE INSTALLED OVER WALL TILE.
  4. OFCI = OWNER FURNISHED; CONTRACTOR INSTALLED.
  5. PROVIDE INSULATION WRAP AT EXPOSED PIPING AT SINKS WHERE NO OTHER PROTECTION IS PROVIDED.
  6. SEE INTERIOR CASEWORK ELEVATIONS - FOR ADDITIONAL ACCESSORIES.



Consultant:

GLENWOOD COMMUNITY SCHOOL DISTRICT  
ATHLETIC COMPLEX IMPROVEMENTS - BID PKG. #2 -  
REBID

Project Location: 400 SIVERS RD.  
GLENWOOD, IA 51534

Sheet Title:

HSR Project Number:

18005

Project Date:

NOVEMBER 2018

Drawn By:

JTD

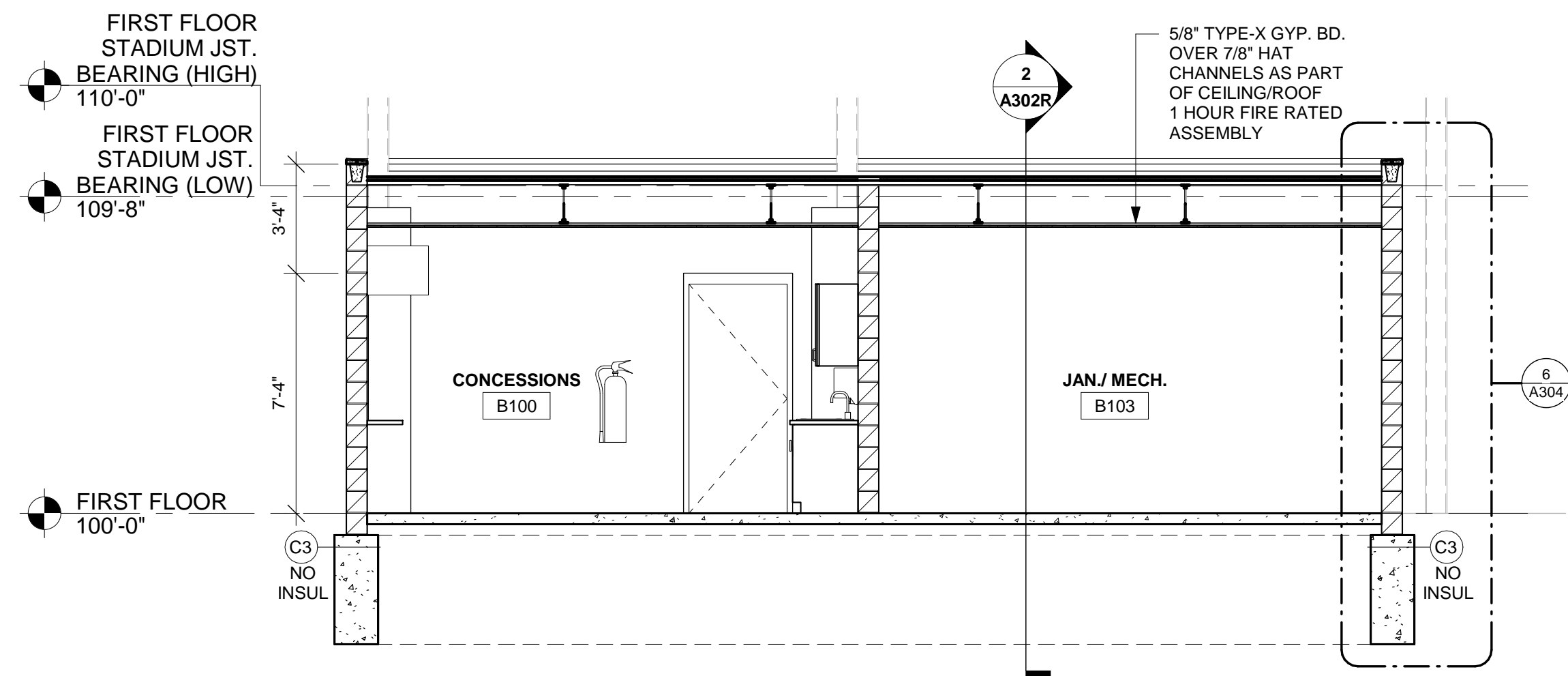
Key Plan:

No.	Description	Date
A2	ADDENDUM #2	11/14/18

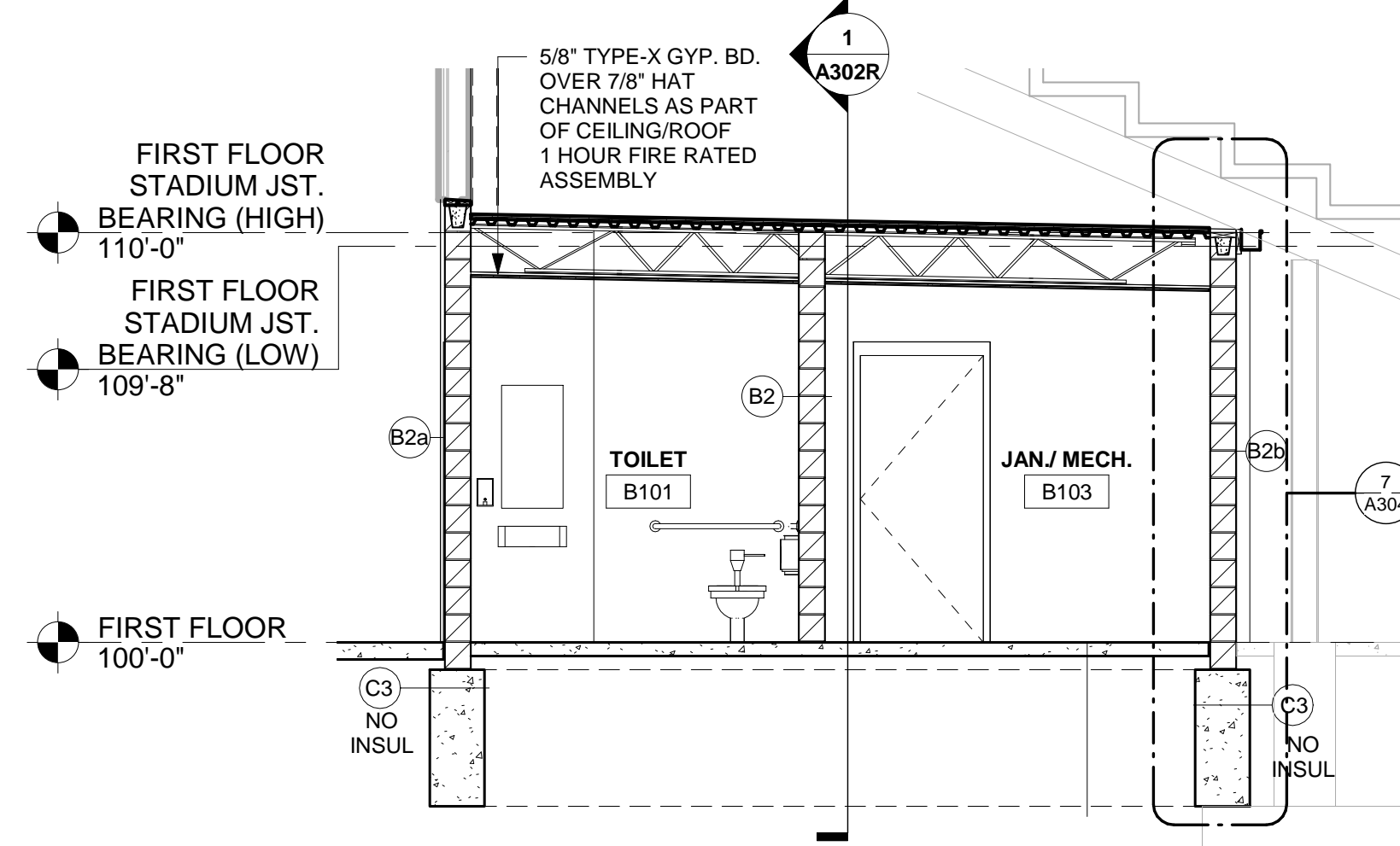
Graphic Scale:  
VARIES

Last Update:  
11/8/2018 11:24:23 AM

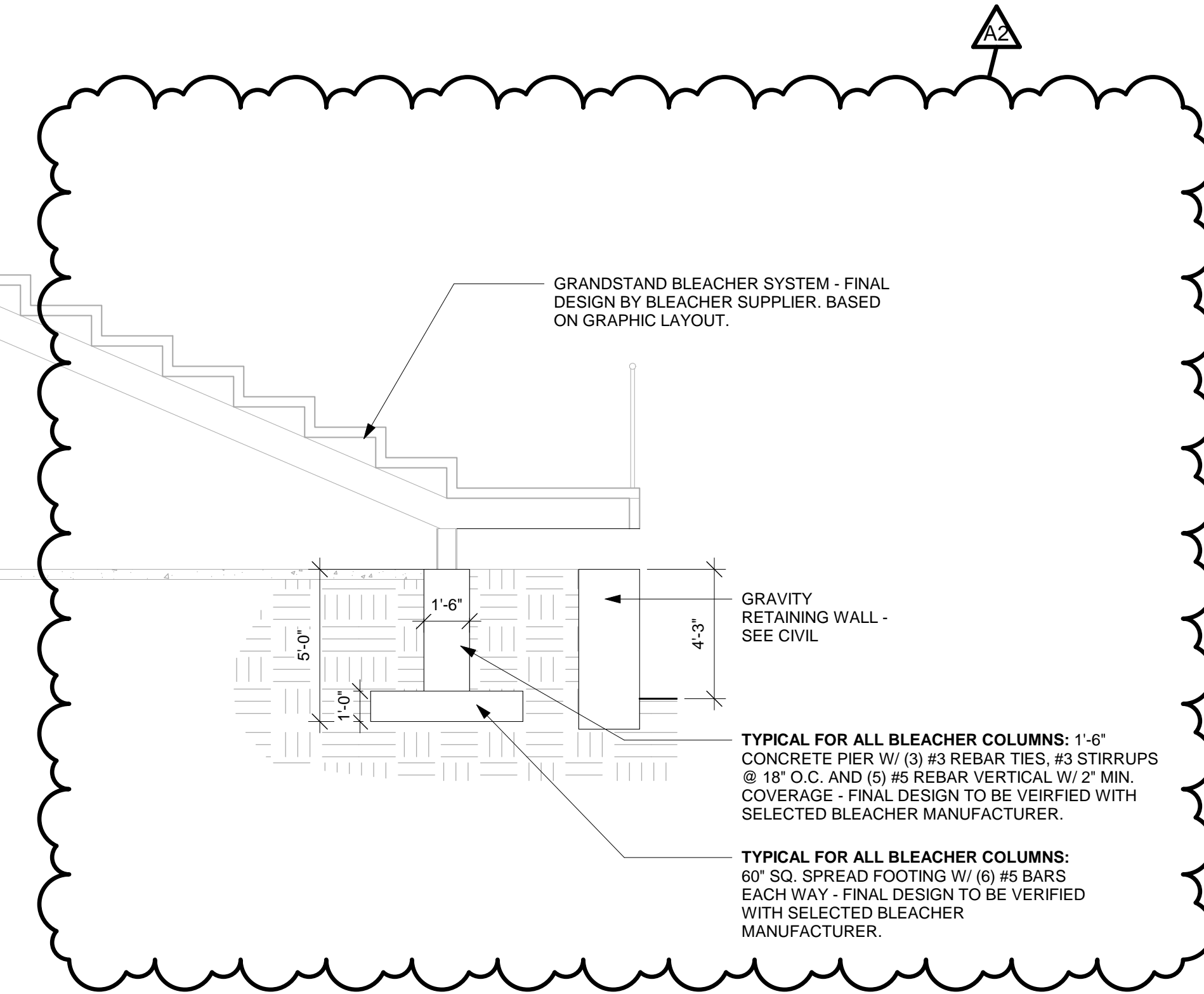
**A302R**



**1 BUILDING SECTION**  
1/4" = 1'-0"



**2 BUILDING SECTION**  
1/4" = 1'-0"



TYPICAL FOR ALL BLEACHER COLUMNS:  
1'-6" CONCRETE PIER W/ (3) #3 REBAR TIES, #3 STIRRUPS @ 18" O.C. AND (5) #5 REBAR VERTICAL W/ 2' MIN. COVERAGE - FINAL DESIGN TO BE VERIFIED WITH SELECTED BLEACHER MANUFACTURER.

TYPICAL FOR ALL BLEACHER COLUMNS:  
60" SQ. SPREAD FOOTING W/ (6) #5 BARS EACH WAY - FINAL DESIGN TO BE VERIFIED WITH SELECTED BLEACHER MANUFACTURER.



HSR ASSOCIATES INC.  
100 MILWAUKEE STREET  
LA CROSSE, WISCONSIN  
PHONE: 608.784.1830  
FAX: 608.782.5844  
www.hsrassociates.com

Consultant:  
**eti**  
Engineering Technologies Inc.  
Mechanical & Electrical Building Solutions  
825 M Street, Suite 200 | Lincoln, NE 68508  
P 402-478-0273 | F 402-478-0714  
1111 N. 5th St., Suite 218 | Omaha, NE 68102  
P 402-330-2772 | F 402-330-2630  
ETI Project No: 2018-113

Project Title: **GLENWOOD COMMUNITY SCHOOL DISTRICT  
ATHLETIC COMPLEX IMPROVEMENTS - BID PKG. #2 -  
REBID**  
Project Location: 400 SIVERS RD,  
GLENWOOD, IA 51534  
Sheet Title: **PLUMBING & GAS RISERS**

HSR Project Number:  
**18005**

Project Date:  
**NOVEMBER 2018**

Drawn By:  
**TJM**

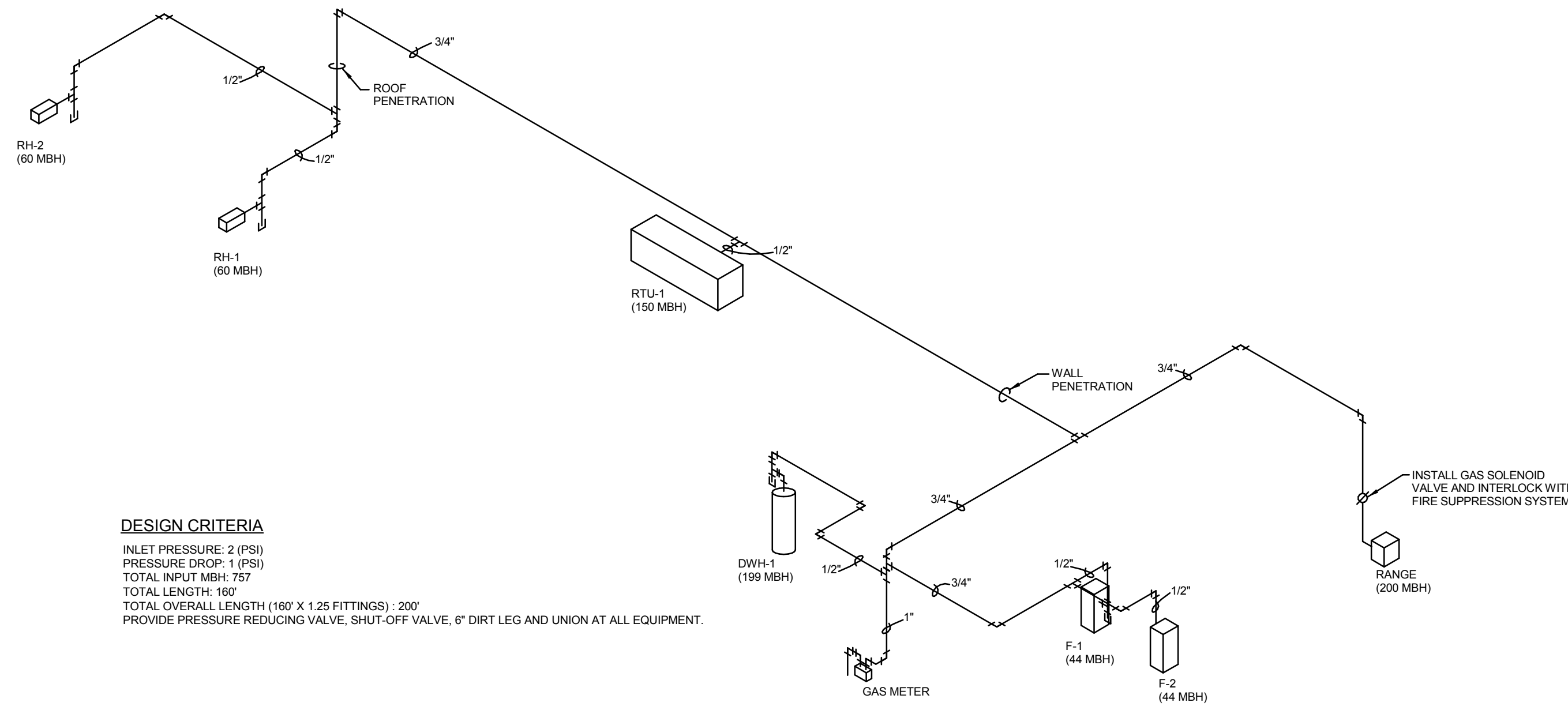
Key Plan:

No.	Description	Date
A2	ADDENDUM #2	11.08.2018

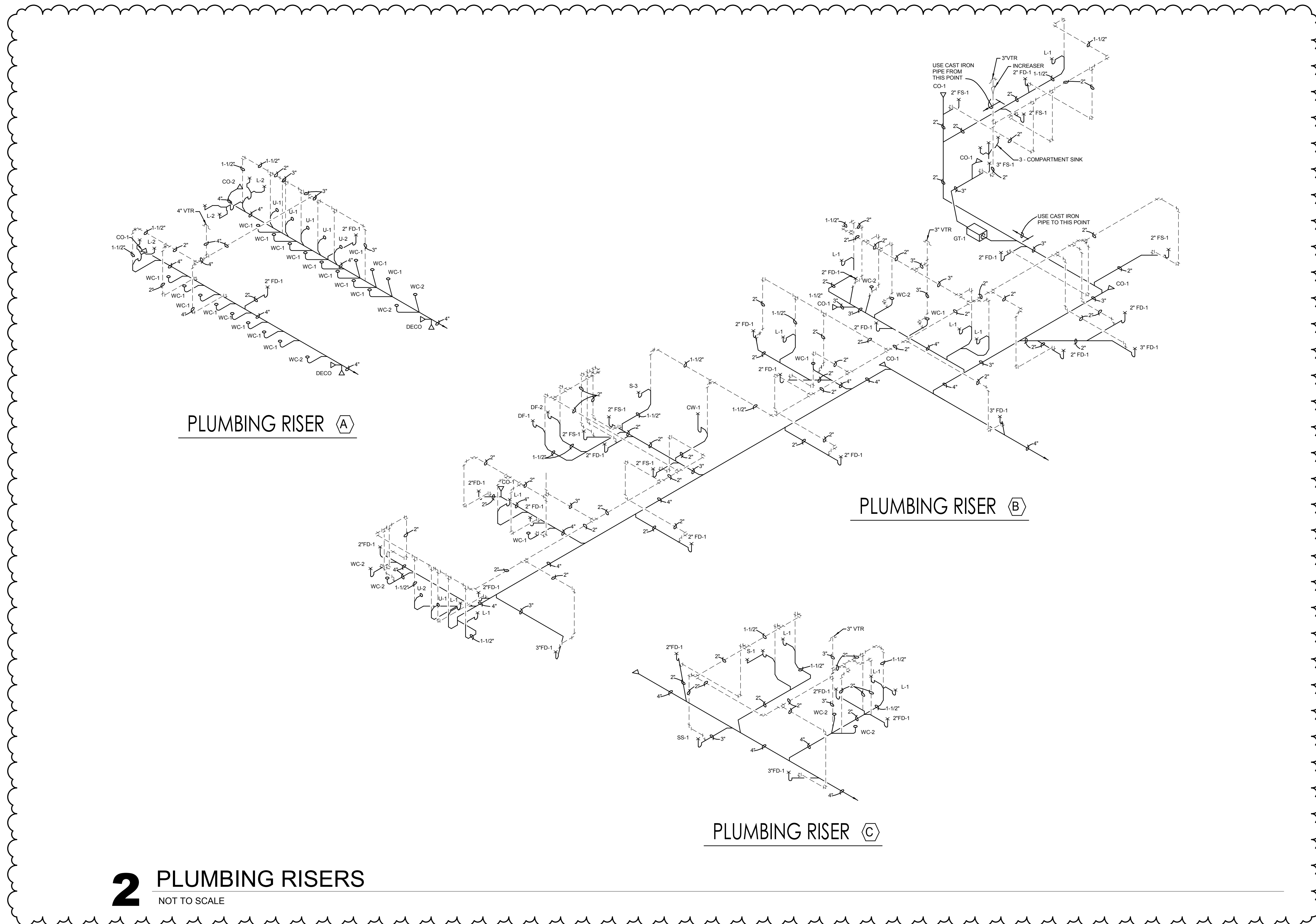
Graphic Scale:  
**VARIES**

Last Update:  
**11/8/2018 1:58:48 PM**

**P104R**



**1 GAS RISER**  
NOT TO SCALE

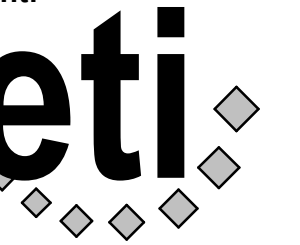


**2 PLUMBING RISERS**  
NOT TO SCALE



HSR ASSOCIATES INC.  
100 MILWAUKEE STREET  
LA CROSSE, WISCONSIN  
PHONE: 608.784.1830  
FAX: 608.782.5844  
www.hsrasociates.com

Consultant:



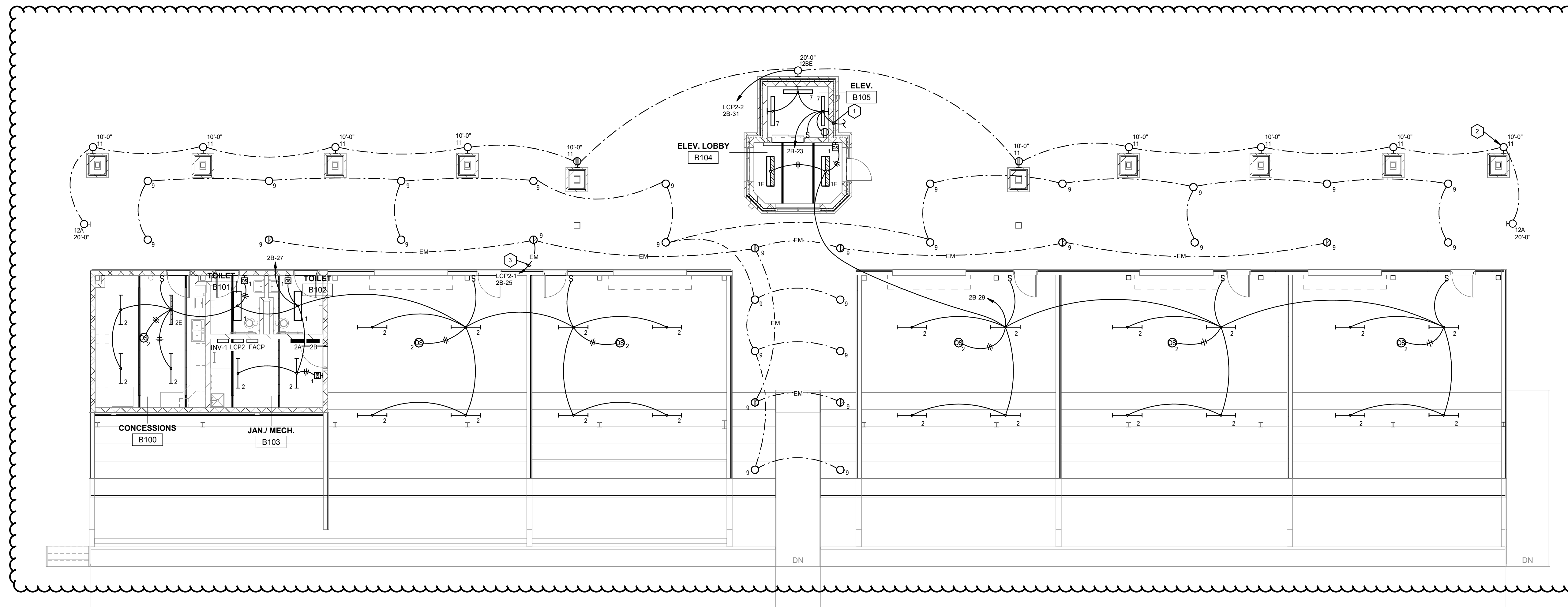
Engineering Technologies Inc.  
Mechanical & Electrical Building Solutions  
825 M Street, Suite 200 | Lincoln, NE 68508  
P 402-476-1273 | F 402-476-1274  
1111 N. 13th St., Suite 215 | Omaha, NE 68102  
P 402-330-2772 | F 402-330-2630  
ETI Project No: 2018-113

**GENERAL NOTES**

- A PROVIDE TEMPORARY POWER, LIGHTING, AND HEATING AS REQUIRED FOR CONSTRUCTION. COORDINATE WITH THE GENERAL CONTRACTOR AND OTHER TRADES.
- B FIRE SEAL ALL PENETRATIONS THROUGH FIRE RATED WALLS, CEILING AND FLOORS.
- C COORDINATE LOCATION OF WIRING DEVICES, TELECOM OUTLETS, FIRE ALARM DEVICES, ETC. WITH MILLWORK, TILE LAYOUT, AND OTHER WALL FINISHES PRIOR TO ROUGH-IN.
- D ALIGN ADJACENT WALL MOUNTED OUTLET BOXES FOR SWITCHES, THERMOSTATS, AND SIMILAR DEVICES. DEVICES SHALL BE ALIGNED VERTICALLY WHEN INSTALLED AT DIFFERING HEIGHTS AND INSTALL ALL ADJACENT DEVICES AT THE SAME HEIGHT TO CENTER. NOTIFY ARCHITECT OF ANY DISCREPANCIES BETWEEN TRADES PRIOR TO ROUGH-IN.

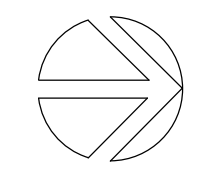
**SHEET NOTES**

- 1 TO LIGHTS ABOVE, SEE SHEET E102.
- 2 COORDINATE EXACT MOUNTING HEIGHT WITH ARCHITECT PRIOR TO ROUGH-IN (TYP).
- 3 CONNECT CIRCUIT THRU INVERTER IN JAN B103, LIGHTS ARE TO BE CONTROLLED WITH NORMAL LIGHTS.



**1** FIRST FLOOR STADIUM LIGHTING PLAN

1/8" = 1'-0"



**GLENWOOD COMMUNITY SCHOOL DISTRICT**  
**ATHLETIC COMPLEX IMPROVEMENTS - BID PKG. #2 -**  
**REBID**  
 Project Location: 400 SIVERS RD.  
 GLENWOOD, IA 51534  
 Sheet Title:

HSR Project Number: **18005**

Project Date: **NOVEMBER 2018**

Drawn By: **SMH**

Key Plan:

No.	Description	Date

Graphic Scale: **VARIES**

Last Update: **11/8/2018 2:39:42 PM**

**E101R**





**HSR ASSOCIATES INC.**  
100 MILWAUKEE STREET  
LA CROSSE, WISCONSIN  
PHONE: 608.784.1830  
FAX: 608.782.5844  
www.hsrasociates.com

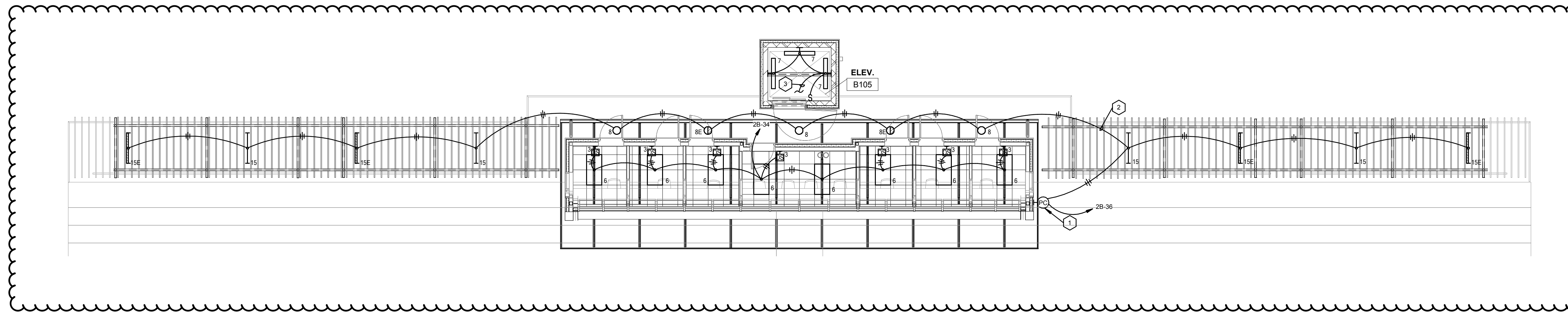
Consultant:  
**eti**  
Engineering Technologies Inc.  
Mechanical & Electrical Building Solutions  
825 M Street, Suite 200 | Lincoln, NE 68508  
P 402-478-1273 | F 402-478-1974  
1111 N. 15th St., Suite 216 | Omaha, NE 68102  
P 402-330-2772 | F 402-330-2630  
ETI Project No: 2018-113

**GENERAL NOTES**

- A PROVIDE TEMPORARY POWER, LIGHTING, AND HEATING AS REQUIRED FOR CONSTRUCTION. COORDINATE WITH THE GENERAL CONTRACTOR AND OTHER TRADES.
- B FIRE SEAL ALL PENETRATIONS THROUGH FIRE RATED WALLS, CEILING AND FLOORS.
- C COORDINATE LOCATION OF WIRING DEVICES, TELECOM OUTLETS, FIRE ALARM DEVICES, ETC. WITH MILLWORK, TILE LAYOUT, AND OTHER WALL FINISHES PRIOR TO ROUGH-IN.
- D ALIGN ADJACENT WALL MOUNTED OUTLET BOXES FOR SWITCHES, THERMOSTATS, AND SIMILAR DEVICES. DEVICES SHALL BE ALIGNED VERTICALLY WHEN INSTALLED AT DIFFERING HEIGHTS AND INSTALL ALL ADJACENT DEVICES AT THE SAME HEIGHT TO CENTER. NOTIFY ARCHITECT OF ANY DISCREPANCIES BETWEEN TRADES PRIOR TO ROUGH-IN.
- E PROVIDE 0-10V LOW VOLTAGE CABLING FROM DIMMER TO DRIVER ON EACH DIMMED FIXTURE AS REQUIRED BY MANUFACTURER.

**SHEET NOTES**

- 1 PROVIDE LINE VOLTAGE PHOTOCELL.
- 2 CONCEAL CONDUIT ALONG STRUCTURAL FRAMING, FIELD COORDINATE.
- 3 TO LIGHTS BELOW, SEE SHEET E101.



**1 SECOND FLOOR LIGHTING PLAN**  
1/8" = 1'-0"

**GLENWOOD COMMUNITY SCHOOL DISTRICT**  
**ATHLETIC COMPLEX IMPROVEMENTS - BID PKG. #2 -**  
**REBID**  
 Project Location: 400 SIVERS RD.  
 GLENWOOD, IA 51534  
 Sheet Title: **PRESS BOX LIGHTING PLAN**

Project Title:	HSR Project Number:	
	18005	
Project Date:	NOVEMBER 2018	
Drawn By:	SMH	
Key Plan:		
Revisions:		
No.	Description	Date
Graphic Scale:	VARIES	
Last Update:	11/8/2018 2:39:43 PM	

**E102R**